

Dura Trac® Clearspan Nursery

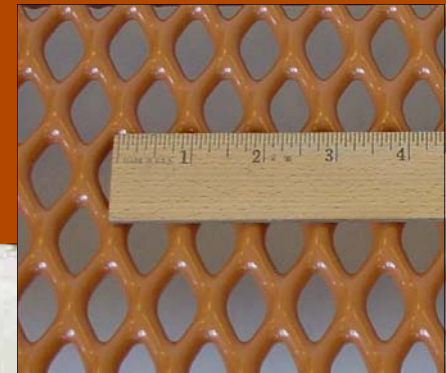
***—Now available—
Custom lengths up to 12' in limited widths.***

***Dura Trac = Durability & Traction
Dura Trac sets the standard in quality built animal flooring.***

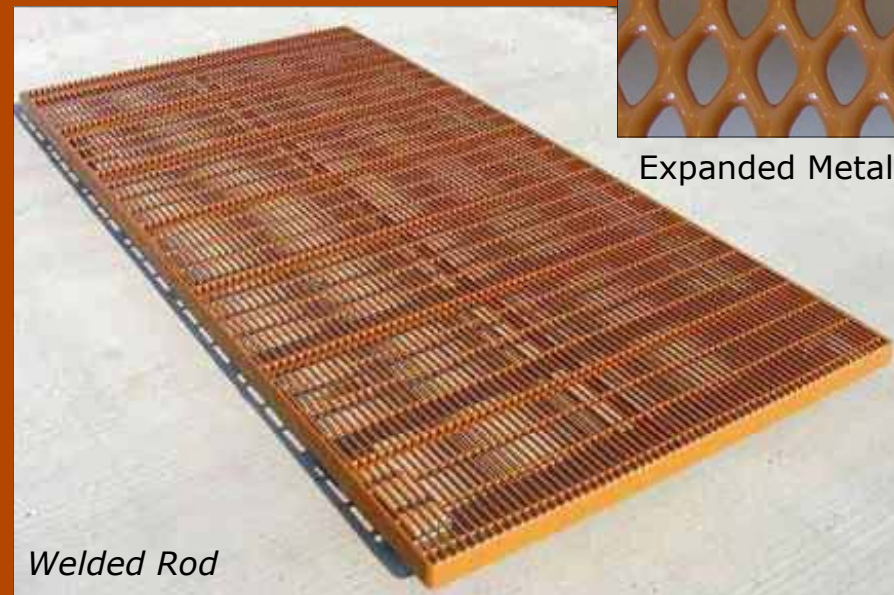
Key Benefits

- Animal comfort and cleanliness***
- Convenient options to customize the floor to your needs***
- Designed for traction, warmth, and prevention of floor related injuries***

***Available in Expanded
Metal or Welded Rod***



Expanded Metal



Welded Rod



**ADA Enterprises, Inc.
305 Enterprize Dr.
Northwood, IA 50459**

Phone: 800-533-6033
Fax: 641-324-1092
Email: sales@adaent.net
Web Site: www.adaent.net